



EDGE

Delhi International School Edge

Model United Nations Conference 4th Edition

"Crusaders To Global Citizenship"

27th and 28th

JULY, 2024

DIS Edge, Sector 18A, Dwarka, New Delhi



THE DIS EDGE MUN

Delhi International School Edge, an esteemed institution under the aegis of Delhi International Group of Schools, adapts our teaching methods to meet the evolving needs of 21st-century education. Our commitment to equity, equality, and inclusion extends to our Model United Nations conferences, fostering empathy and understanding

DIS Edge MUN offers a platform for young leaders to address real-world issues, propose solutions, and engage in cross-border debates while connecting with peers from different schools. Expect a personalized, engaging, and dynamic experience that will redefine your MUN journey.

In this epoch of profound global evolution, we gather with a steadfast commitment to adapting pedagogical methodologies to meet the exigencies of 21st-century education. At Delhi International School Edge, our ethos is deeply rooted in the principles of equity, equality, and inclusion, permeating every facet of our academic ethos, including the experience that will redefine your MUN journey.

I am honored to announce the convening of the fourth iteration of the Delhi International School Edge Model United Nations Conference, slated for July 06th and 07th, 2024. This April assembly serves as an unparalleled forum for burgeoning leaders such as yourselves to engage in earnest discourse on matters of global import, proffer innovative solutions, and partake in spirited cross-border deliberations, all while fostering bonds of fellowship with peers representing diverse backgrounds and educational institutions.

At DIS Edge MUN, our dedication to the principles enshrined within the United Nations Sustainable Development Goals (SDGs) is unwavering. We believe fervently in the transformative potential of these goals and endeavor to facilitate nuanced exploration of their tenets, thereby nurturing a generation of conscientious global citizens committed to effectuating positive change.

What distinguishes DIS Edge MUN is our unwavering commitment to curating a bespoke, immersive, and dynamic experience for each delegate. We hold in highest regard the intrinsic brilliance of every participant, endeavoring to cultivate an environment wherein camaraderie and fellowship thrive amongst students harboring an array of interests and perspectives.

As you embark upon this collective endeavor, I beseech you to seize this occasion for intellectual enrichment and personal growth. Let us convene, deliberating with diligence and resolve, as we endeavor to advance the cause of global progress and inclusivity collectively.

Delhi International School Edge

MUN 4.0

STANDING ON THE EDGE

"Edge of Confluence: Navigating the Intersecting Realms of Climate Crisis, Geo-Politics, and Health Disasters"

In the contemporary narrative of global challenges, the convergence of the climate crisis, geo-political intricacies, and health disasters stands as a complex and urgent triad. This thematic exploration delves into the interconnected dynamics of these three realms, unraveling the intricate ways in which they shape each other and collectively impact the well-being of our planet. "Edge of Confluence" delves into various dimensions:

Climate Crisis Unveiled and the Unfolding Climate Catastrophe- A comprehensive examination of the current state of the climate crisis and the escalating environmental disruptions it brings analyzing the impact of climate change on ecosystems, biodiversity loss, and the subsequent implications for public health.

Geo-Political Chessboard - Power Play in a Warming World and evaluating how nations maneuver within the geo-political landscape amid the climate crisis, with a focus on strategic interests, alliances, and conflicts. Diplomacy in the Face of Climate Challenges in Investigating international cooperation, treaties, and conflicts shaped by the intersection of climate issues and global politics.

Health Disasters and Pandemic - From Zoonoses to Global Health Threats and examining the links between climate change, environmental degradation, and the emergence of health disasters, including pandemics. Resilience and Global Health Governance in assessing the preparedness and response mechanisms at local and international levels to health crises exacerbated by climate change.

Interconnected Vulnerabilities - Exploring the impact of climate-induced migration on public health, human security, and the geopolitical landscape and resulting into displacement and climate refugees

Environmental Justice: - Addressing the disproportionate health impacts of the climate crisis and geo-political decisions on marginalized communities.

A Holistic Approach to Resilience- Integrating Health into Climate Policy advocating for a comprehensive approach that considers health outcomes in climate change mitigation and adaptation strategies.

Global Collaboration for Planetary Health:- Highlighting the imperative for nations to work collectively in addressing the interconnected challenges of climate, geopolitics, and health. As we teeter on the edge of this intricate nexus, the urgency of a holistic understanding and collaborative action becomes evident. Navigating the confluence of the climate crisis, geopolitics, and health disasters demands a collective commitment to resilience, diplomacy, and innovative solutions. Only through a united front can humanity hope to find stability on the edge of this multifaceted challenge and safeguard the well-being of current and future generations.

FROM THE DESK OF CHEF D'AFFAIRES PRINCIPAL, DELHI INTERNATIONAL SCHOOL EDGE

Dear Esteemed Delegates, Honorable Faculty Advisors, and Distinguished Participants

NAMASKAAR !

In our ever-evolving world, where the realms of climate crisis, geo-politics, and health disasters intersect, we must equip our students with the values, skills, and mindset necessary to navigate these challenges. As a progressive educational institution, we hold dear the ethos of fostering critical thinking, diplomatic skills, and a global perspective among our students.

DIS Edge MUN conferences are the signature platform for young minds to engage in diplomatic discourse, teamwork, and effective problem-solving, with the noble aim of fostering a more peaceful, sustainable, and fairer planet. Under the theme "Edge of Confluence," delegates will have the unique opportunity to represent various countries, participate in stimulating debates, draft resolutions, and devise innovative solutions to pressing global issues.

Our team of experienced MUN enthusiasts is dedicated to providing all delegates with a professional and intellectually stimulating experience. We have meticulously selected a diverse range of topics that reflect the complexity and urgency of contemporary global challenges. Our team of leaders is nurtured and trained to keep humane values at the core of their decision-making debates. Through engaging with these issues, participants will not only deepen their understanding of international affairs but also hone their public speaking, negotiation, and research skills, while staying rooted in our ethos.

We extend a warm invitation to your school to send a delegation of passionate students to participate in this prestigious event. We are confident that your students will find the conference intellectually rewarding, fostering friendships, and creating lasting memories.

I wish all MUNers the best as they embark on their crusade to unearth knowledge and navigate the edge of confluence.

Dum Spiro Spero

With anticipation and resolve,
Anubha Srivastava



FROM THE DESK OF: MUN CHARGÉ D'AFFAIRES

Dear Esteemed Delegates, Honorable Faculty Advisors, and Distinguished Participants,

As we find ourselves at the juncture of global challenges, we are not mere observers of the journey, we embody the very essence of the path. Our roles extend beyond being mere catalysts for change; we represent the core of humanity, progress, and community.

In this unparalleled era of interwoven complexities, where the strands of the climate crisis, geopolitics, and health disasters converge, our collective call to action resonates. Navigating these intersecting realms to carve a brighter tomorrow necessitates leaders and global citizens endowed with the vision, skills, and determination to instigate positive change.

With great enthusiasm, we unveil the highly anticipated 4th edition of our conference: DIS EDGE MUN 4.0, themed "Edge of Confluence: Navigating the Intersecting Realms of Climate Crisis, Geo-Politics, and Health Disasters." Join us on this expedition as we address the paramount issues of our era and chart a course toward a more sustainable and resilient future.



RICHA SISODIA



SECRETARY GENERAL – RYBA PAHWA

Welcome to the 4th edition of the Delhi International School Edge Model United Nations Conference, themed "Edge of Confluence: Navigating the Intersecting Realms of Climate Crisis, Geo-Politics, and Health Disasters." This conference provides a unique lens into the intricate challenges of our world, where each topic demands a depth of understanding beyond what textbooks can offer.

At DIS Edge, we are dedicated to fostering a culture of civil discourse within our community. By combining these insights with academic rigor, we aim to provide participants with a profound understanding of the complexities our world faces. Learning becomes an organic process, comprehension becomes second nature, and the resolution of disputes becomes the standard.

We are confident that this competition will be a resounding success, offering participants a platform to delve into the pressing issues at the confluence of climate crisis, geo-politics, and health disasters. Best of luck to all participants as we embark on this intellectual journey together. May the Edge of Confluence inspire thoughtful discussions and contribute to the development of a truly global society.

DIRECTOR GENERAL – NAMAN AMOL POKHARNA

It brings me great joy to oversee the coordination of the 4th edition of the Delhi International School Edge Model United Nations Conference, themed "Edge of Confluence: Navigating the Intersecting Realms of Climate Crisis, Geo-Politics, and Health Disasters."

At the heart of our vision for Model United Nations (MUNs) lies a commitment to transcend them beyond mere campus activities. We believe MUNs should serve as a profound platform for students to gain awareness of the challenges faced by less fortunate communities worldwide.

Reflecting on the words of the esteemed French philosopher Voltaire, "I profoundly disagree with what you say, but I will protect your freedom to express it with my life." In a world witnessing a decline in intellectual discourse, our mission is to champion polite debate even on the most divisive issues. Through this, we aspire to contribute to the creation of a more accepting and tolerant society.

I extend my heartfelt wishes for the resounding success of this event and extend my sincere congratulations to all participants and organizing committee members for their dedicated efforts. May the Edge of Confluence theme inspire thoughtful discussions that contribute to positive change on a global scale.



PARTICIPATION INVITED FROM:

Students from classes 6th-12th ;
individually or as school delegation.

Fantasy committee exclusively for the
students of classes 6th and 7th.

UNGA and UNSC committee is open for
delegation for the students of first year
of Graduation

International Press registration will be open
for the limited time period.

The participation is limited to a minimum
of 6 delegates and a maximum of 15
delegates per school

Committees and Agendas



WHO

AGENDA:- Establishment of Global Framework for Mental Health Crisis



AIPPM

AGENDA:- NRC : National Register of Citizens



GENERAL ASSEMBLY

UNGA

AGENDA:- The New AI Space Race with special emphasis on Peace, Security and Demilitarization



United Nations

UNSC

AGENDA:- Special session for the de-escalation of tension between Israel and Palestine with special emphasis to situation in Gaza Strip



UNEP

UNEP

AGENDA:- Discussing Sustainable development guidelines for nations with special emphasis on race to build concrete architectural wonders.



FANTASY COMMITTEE

Agenda AVENGERS- Thanos: Saviour or Destructor



Are you a grade 6 or 7 student eager to dive into the world of diplomacy and international affairs? Look no further! This year, we are thrilled to introduce our exclusive Fantasy Committee tailored specifically for beginners like you.

What is the Fantasy Committee?

The Fantasy Committee offers a unique and welcoming environment for students who are new to Model United Nations. It provides a simplified and engaging introduction to the workings of the United Nations, where participants can explore diplomacy, negotiation, and problem-solving in a fun and supportive setting.

Why Join the Fantasy Committee?

Tailored for Beginners: Designed with grade 6 and 7 students in mind, this committee offers a gentle introduction to the MUN experience.

Interactive Learning: Participants will engage in hands-on activities, role-playing scenarios, and collaborative discussions to develop essential skills such as public speaking, critical thinking, and teamwork.

Supportive Environment: Our experienced chairs and mentors will provide guidance and support every step of the way, ensuring that all participants feel comfortable and empowered to contribute.

epic quests.



ACKNOWLEDGMENTS AND DISTINCTIONS

"In the pursuit of excellence, success is not merely the destination but the discovery of a purposeful journey, relishing each step along the way."

Our dedicated delegates stand poised to claim prestigious recognitions within each committee, accompanied by a certificate of merit, distinguished under the following United Nations conference categories:



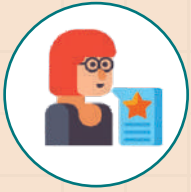
BEST DELEGATE



BEST PHOTOGRAPHER



BEST REPORTER



BEST CARICATURIST



HIGH COMMENDATION



SPECIAL MENTION



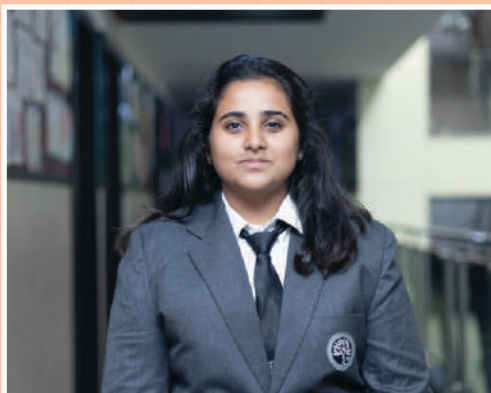
VERBAL MENTION

Furthermore, exceptional contributors will be rewarded with a coveted cash prize in categories including Best Delegate, Best Photographer, Best Caricaturist, and Best Reporter.

KEY FEATURES OF DIS EDGE MUN CONFERENCES:

- **Optimal Committee Size for Equal Participation:** Ensuring an ideal committee size to provide equal opportunities for all delegates.
- **Engaging Agendas:** Thoughtfully curated and interesting agendas to stimulate dynamic discussions.
- **Exclusive Fantasy Committee for Beginners (Grade 6th & 7th):** A dedicated space for newcomers to ease into the Model United Nations experience.
- **Experienced Executive Board:** A seasoned Executive Board ensuring a well-guided and enriching conference.
- **Comprehensive Background Guides & Research Links:** Executive Board Members provide detailed resources 15 days before the conference to facilitate thorough preparation.
- **Socials and Fairs for Lasting Memories:** Beyond diplomacy, social events and fairs are organized to create cherished memories.

MUN SECRETARIAT



SECRETARY GENERAL
RYBA PAHWA



DEPUTY SECRETARY GENERAL
AVISHI YADAV



DIRECTOR GENERAL
NAMAN AMOL POKHARNA



DEPUTY DIRECTOR GENERAL
PRAKRITI JOSHI



UNDER SECRETARY GENERAL FOR DELEGATE AFFAIRS
AYUSH KUMAR LENKA



**UNDER SECRETARY GENERAL
FOR EB AFFAIRS
LAVANSHIKA SANKHLA**



**UNDER SECRETARY GENERAL FOR
MEDIA AND MASS COMMUNICATION
AARAV SHARMA**



**UNDER SECRETARY GENERAL
FOR MARKETING
PRANAY JOHAR**



**UNDER SECRETARY GENERAL FOR IT
PRATYUSH TIWARI**



**UNDER SECRETARY GENERAL FOR
CULTURAL EVENTS
RITISHA RAJPUT**



**CREATIVITY HEAD
LAKSHITA SHARMA**



PARTICIPATION GUIDELINES

Eligibility : In the pursuit of fostering meaningful and inclusive discourse, participation is exclusively open to enrolled students ranging from standard VI to XII. Certain committees extend invitations to first-year graduation students.

Dress Code: Delegates are urged to conform to designated "Day Codes" to authentically embody their country/delegation:

Day-1	Attire in Western Formal Wear
Day-2	Adorn Indian Formal Wear

Note: For Indian Committees, adherence to Indian formals is mandatory on both conference days.

Language: English stands as the official and working language, upholding equity in diversity. Bilingualism (Hindi/English) is accepted for Indian Committees.

Awards: The prerogative for committee awards lies with the Executive Board. Decisions made by the Executive Board regarding awards are considered conclusive and obligatory.

Venue: Delhi International School Edge, Sector - 18, Dwarka.

ORGANIZING COMMITTEE MEMBERS



ARYAN VERMA
X A



AARAV SHARMA
X A



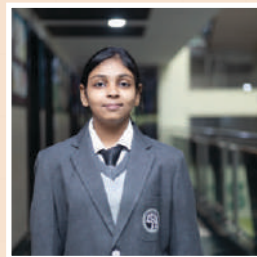
DHAIRYA KABRA
X A



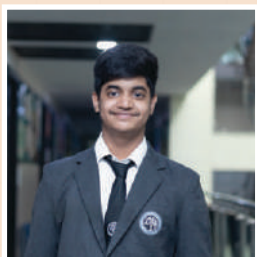
TILAK RAJ CHAUHAN
X A



SHAURYA CHATTERJEE
X A



ALISHA PREET
XI



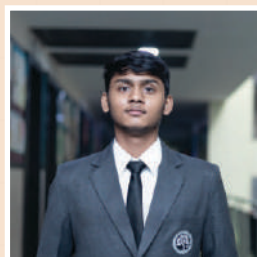
RYAN SACHDEVA
XII



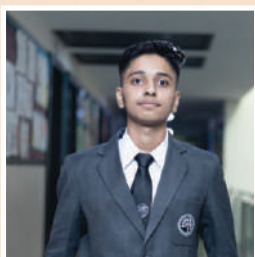
DHAWAL PATEL
XII



KANISHKA
XII



DHYMANSHU SHARMA
XII



VISHAL KUMAR
XII



TANVI GUPTA
XII



SAMEER BAGHEL

XII



HARSHITA SAROHA

XII



RUDRAKSH PRATAP

SINGH XII



JASRAJ SINGH

XII



SACHIN KUMAR

XII



NAMAN

XII



DIVYANKA

XII



SAKSHI

XII



ANSHIKA

XII



VASU TOMAR

X



PRIKSHIT

X



NIHARIKA PHARTHYAL

X



VRITHI UPADHYAYA

X



AASHI GUPTA

X

REGISTRATIONS :

The individual delegate registration fee is

RS. 1500/-

for each Delegate

The school delegation registration fee is

RS.1200/- ALONG WITH RS.1500/-

delegation fee to be paid per delegate.

TO CONFIRM REGISTRATIONS

ACCOUNT DETAILS FOR REGISTRATION:

Beneficiary Name: DELHI INTERNATIONAL
SCHOOL EDGE

Current Account No.: 920030056855391

IFSC Code: UTIB0003743

Bank Name: AXIS BANK LTD



NOTE: It is mandatory to upload the screenshot of payment in the registration form.

**THANK YOU FOR YOUR COOPERATION.
WE LOOK FORWARD TO YOUR ACTIVE PARTICIPATION.**

DISEGE MUN 4.0-MAJOR ATTRACTION CAREER CATALYST

"Unlock your future at the Career Fair – where opportunities converge with ambition!"
Your pathway to recognition and achievement commences here.

✦ **DATE:** 27th JULY, 2024

✦ **TARGET BENEFITERS :**

- Participant school counselors invited for Career Counseling workshops facilitated by renowned universities.
- Teachers from participant schools eligible for career counseling sessions and participation certificates.
- Students engaged in Model United Nations (MUN) also stand to benefit.

✦ **BENEFITS FOR PARTICIPANTS:**

Counselors and Teachers:

- Access to expert-led workshops for comprehensive career guidance.
- Opportunity to enhance professional skills and knowledge.

✦ **MUN STUDENTS:**

- Enhanced networking opportunities with universities and other students.
- Exposure to a diverse range of courses and career paths.
- Get test prep advice from industry experts. Practical tips for your application.
- Understand admission requirements.
- Access to exclusive scholarship advices.

CONTACT US

☎ 9599964446, 8077429431,
☎ 9910341421, 9560361849

✉ mun@disedge.ac.in

✉ info@disedge.ac.in



@disedgemun



@disedge



@disedgedwarka



@disedgedmun





🌐 www.disedge.ac.in



"Creating Global Heads with Hearts"

TOGETHER, LET'S WALK THE ROAD OF EQUITY,
EQUALITY, AND INCLUSION AT THE 4.0 EDITION:
DIS EDGE MUN CONFERENCE 2024.

ASSOCIATIONS AND CERTIFICATIONS

 <p>Cambridge Assessment International Education Cambridge International School</p>	 <p><i>JQ Foundation</i> Technology enabling the dreams of education</p>	 <p>Interact Patrocinado por Rotary</p>	 <p>Eat Right India सही भोजन. सेंगर जीवन.</p>	 <p>GENERATION GLOBAL</p>		
					 <p>Programas Interculturales Paraguay</p>	